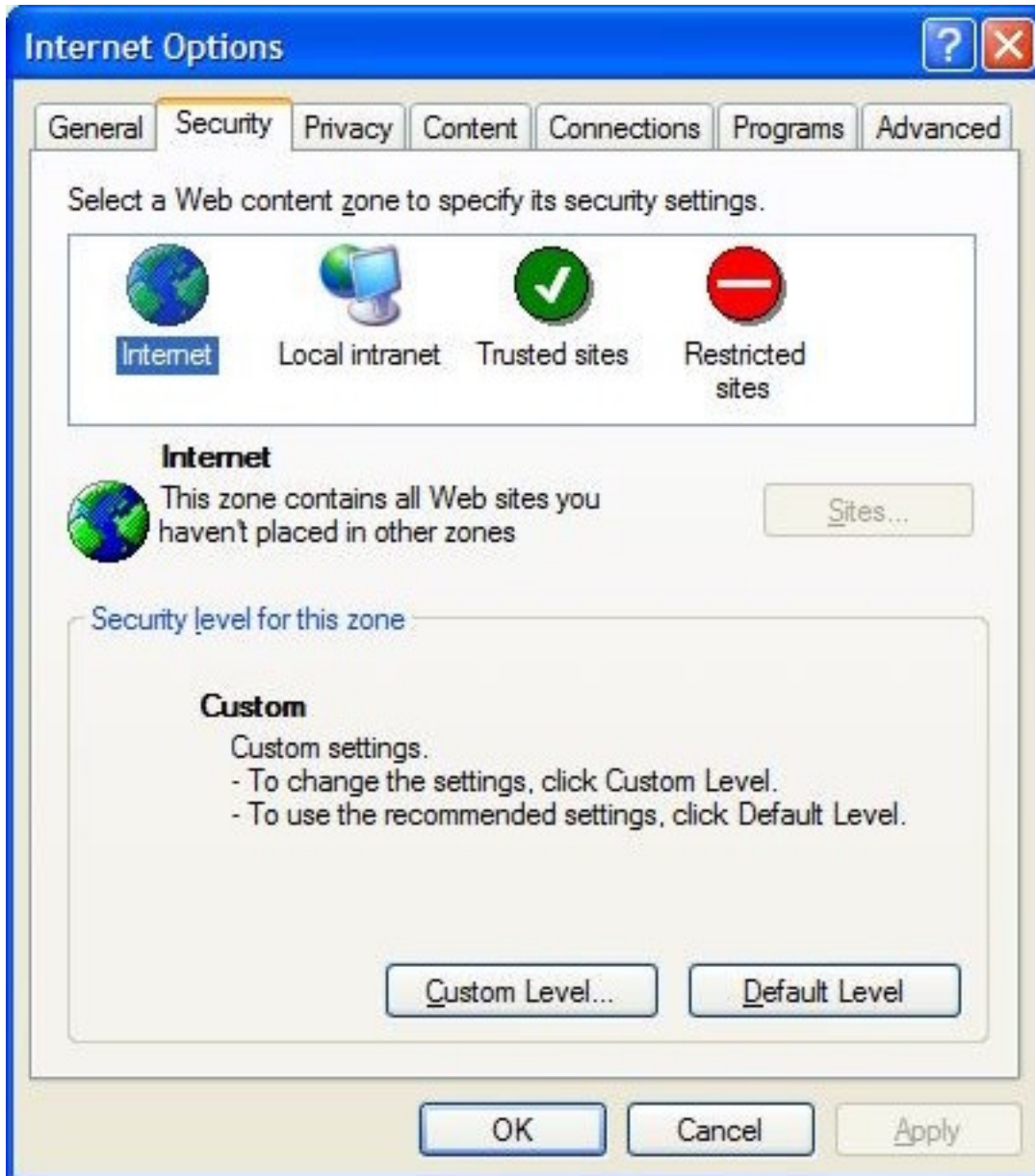


Solving the Google Custom Search Engine Internet Explorer internal link problem.

Check your Internet Explorer security settings and see if you can also reproduce this.

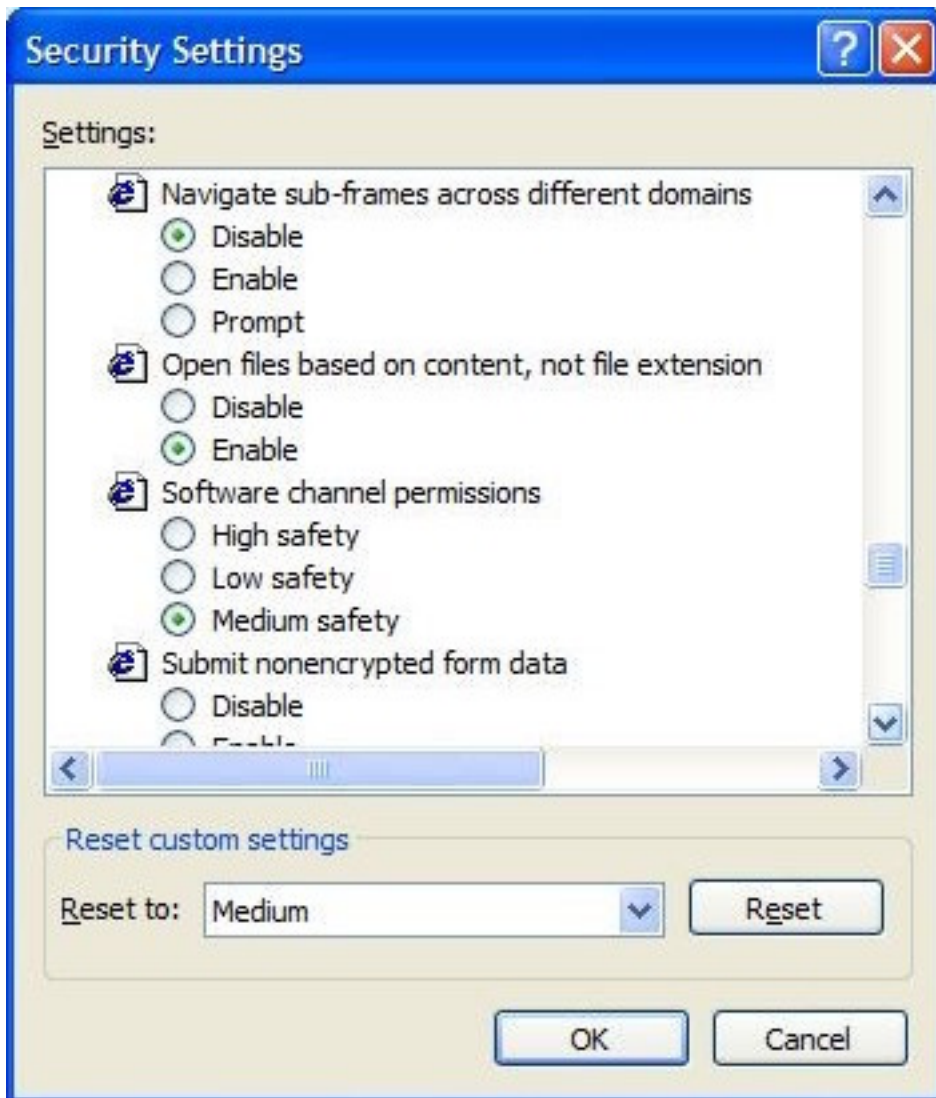
Tools->Options->Security tab

What is the current setting for you for the Internet Zone?



If it is set to "Custom , " change it to the Default by clicking "Default Level" and the problem with the links not working on the Outpost search results page should go away.

If it does not, go back in to the "Custom Level" and check all the settings . Change the setting "Navigate sub-frames across different domains" from "Disable" to "Enable." Also, changing the settings back to the default (Medium) usually results in the link working again.



If this does not work, you can still get to the linked articles by copying the URL listed and pasting into your browser.